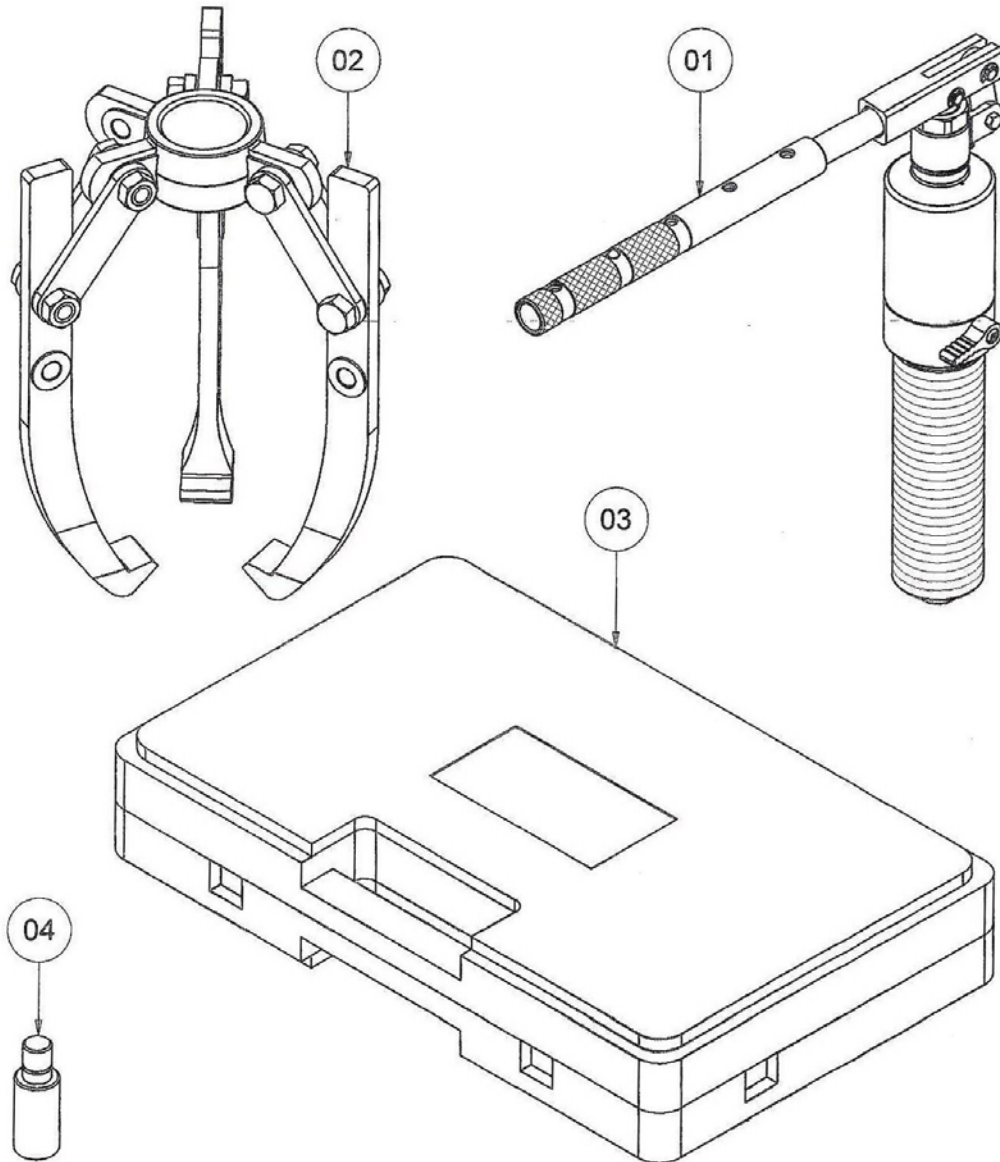


# H.C.B-B2165

## HYDRAULIC BEARING PULLER

### (8 TONS)



REF NO.	DESCRIPTION	QTY
01	Puller Body	1
02	Jaw Assembly	1
03	Blow Molded Case	1
04	Extension Bar	1

# IMPACT HYDRAULIC PULLER

Operating Manual and  
Parts List for:

**Note:** These instructions must be read and carefully followed.

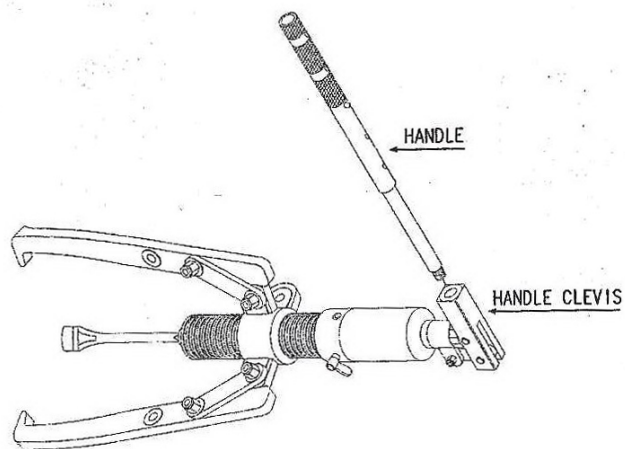
## SAFETY NOTES

- ◆ These pullers should be used by trained personnel familiar with them.
- ◆ Select the proper size and capacity of the puller for job.
- ◆ Align the puller on the same centerline as the part being removed. Failure to align parts correctly can result in a dangerous operating situation because of the high hydraulic pressure used.
- ◆ Wrap the work in the attached protective blanket before applying pressure to provide protection from injury caused by flying parts should a part ever break.
- ◆ Always apply force gradually.
- ◆ Never heat the part to be removed, when the puller connect with the part. The heating can result in the damage on the parts of puller.

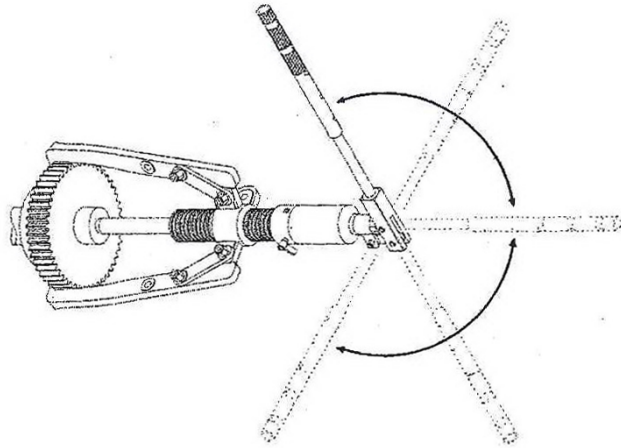
## SETUP AND OPERATION

**NOTE:** These pullers have a 2/3-way combination puller head, The 3-way combination is strongly recommended whenever the job space allows for it. Three jaws give a more secure grip and more even pulling force.

1. Select the proper size and capacity of puller needed for the job, which is determined by measuring " reach " and " spread " of the part to be pulled.
2. Screw the foldable handle into the handle clevis. See Figure 1.



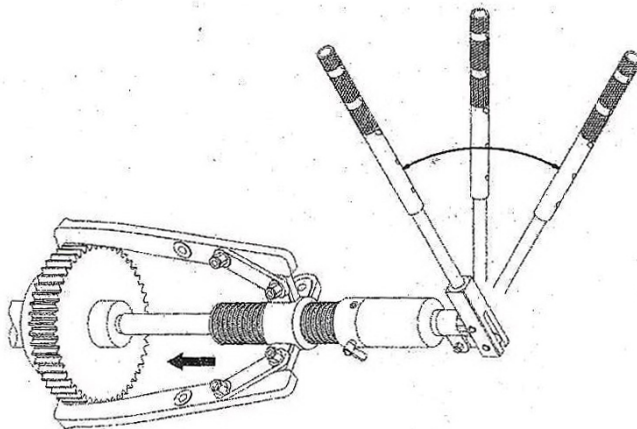
**Figure 1.**



**Figure 4.**

**6. Hold the puller with one hand and pump the handle with the other hand, advancing the piston until the part is removed.**

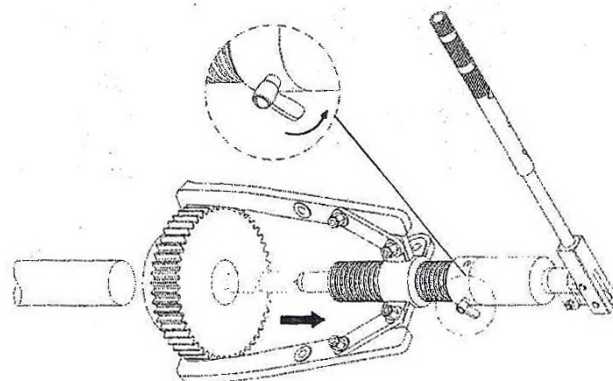
**See Figure 5.**



**Figure 5.**

**7. Turn the control valve knob completely in a counterclockwise direction to retract the piston.**

**See Figure 6.**



**Figure 6.**